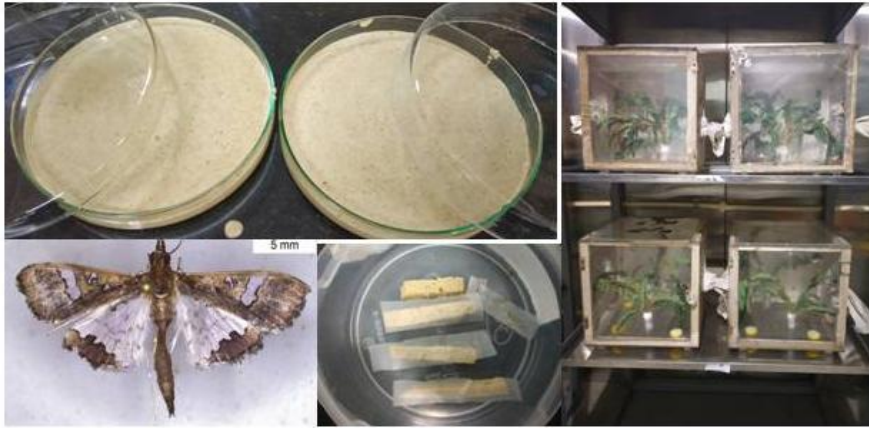


## Development and maintenance of iso-female and inbred lines of susceptible insect pests

- **Brand Name:** Shatpada - Iso-female insect lines
- **Constituent:** Insecticide susceptible



- **National accession numbers:**

*Pectinophora gossypiella* Saund. (Iso Female Line): NBAIL- MP-GEL-02a  
*Tuta absoluta* (Meyrick) (Iso Female Line): NBAIR-MP-GEL-03a  
*Leucinodes orbonalis* Guenee (Iso Female Line): NBAIR-IS-CRA-01a  
*Maruca vitrata* (Fabricius) (Iso Female Line): NBAIR-IS-CRA-02  
*Spodoptera frugiperda* (JE Smith) (Iso Female Line): NBAIR-MP-NOC-05a

Deposited at National Insect Museum of ICAR-NBAIR

- **Production method:** Semi synthetic diet / plant based
- **Target pest and crop:** Valuable for screening of plant germplasm lines and insecticidal molecules
- **Target states:** All the states in India
- **Validation:** The iso-female insect lines were developed and being maintained under laboratory conditions.
- **Benefits:** Could be used for screening of plant germplasm lines and insecticidal molecules and in genetic crossing experiments by researchers, students and seed companies
- **Commercialization of technology:** To be commercialized

**Contact:** Director, ICAR- National Bureau of Agricultural Insect Resources, Bangalore-560 024.  
[director.nbair@icar.gov.in](mailto:director.nbair@icar.gov.in)